

- ALL MANUAL CALL POINTS TO BE ACCOMPANIED BY A 'SIMULTANEOUS' FIRE ACTION NOTICE - EVALUATION
- ALL FIRE DOORS TO BEAR THE SIGN 'FIRE DOOR'.
- ALL AUTOMATIC FIRE DOORS TO BEAR THE SIGN 'AUTOMATIC FIRE DOOR' (KEEP CLEAR)
- ALL FINAL EXITS TO BE INDICATED BY 'FIRE EXIT' SIGNAGE + BE ILLUMINATED EITHER INTERNALLY OR EXTERNALLY
- ALL SELF CLOSING FIRE DOORS TO BEAR THE SIGN 'FIRE DOOR KEEP SHUT'
- ALL CEILING HATCHES TO BE RDSOS

FIRE ASSEMBLY POINT

Revisions	
Stage	Date

Drawing No 001
 Project No 900
 Date MAY 2012

Client MORDEN REALTY MANAGEMENT LTD.
 9 WEST HILL, MIDDX, HA99 RN.

Project MORDEN HALL, MORDEN HALL RD, MORDEN, LONDON. SM4 5JD - BANQUETING / HOSPITALITY USE & ANCLLARY OFFICES

Title EXISTING G.F. PLAN

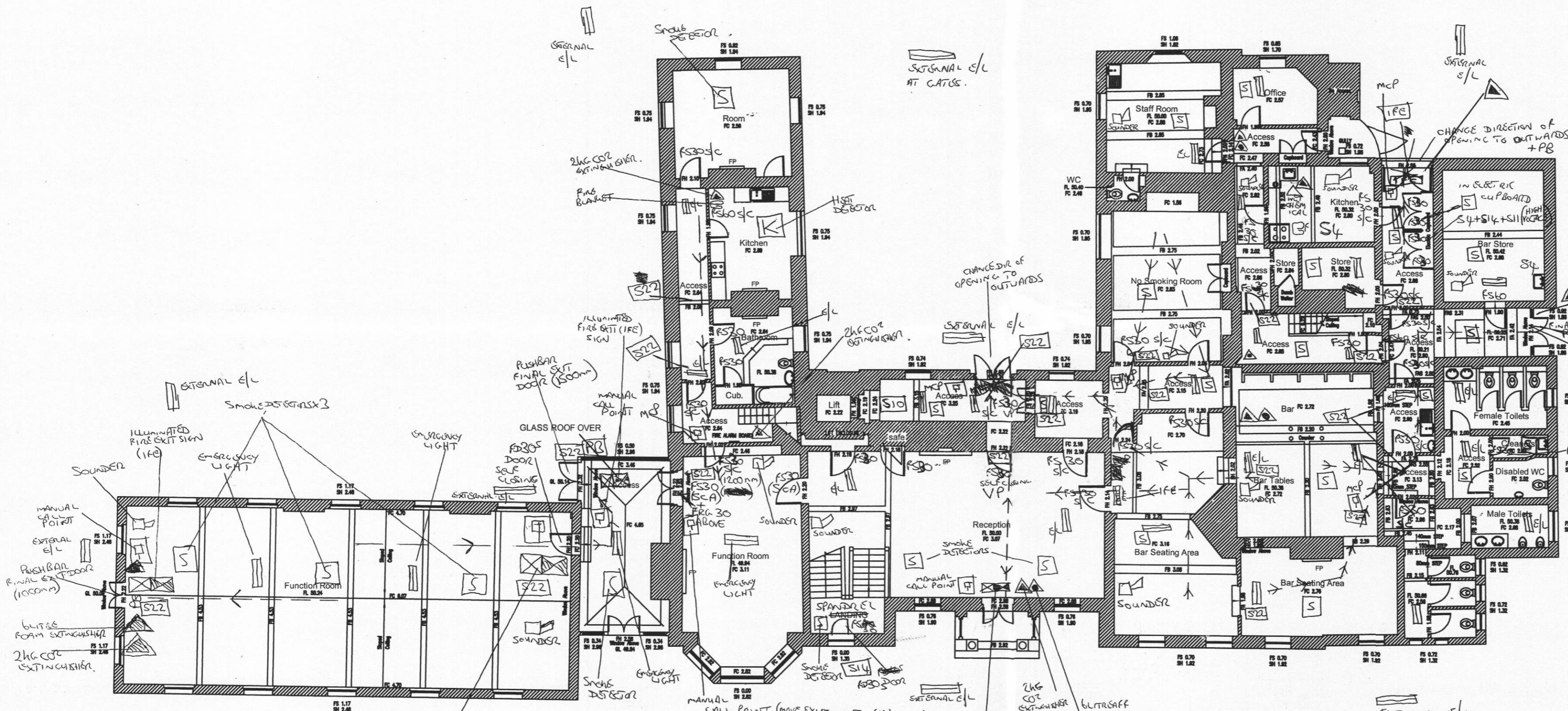
David R Yeaman and Associates, Chartered Architects. TEL: 020 8424 0801 FAX: 020 8424 2808

COPYRIGHT © This drawing is copyright and must not be copied or reproduced without the written consent of David R. Yeaman and Associates

- 1 This drawing must not be scaled
- 2 The Contractor is to check all levels and all dimensions on site
- 3 All works are to be to the satisfaction of Local and Statutory Authorities and in accordance with current Building Regulations and Codes of Practice

SCALE 1/100

FAP - FIRE ASSEMBLY POINT
 FAS - FIRE RESISTING ASSEMBLY POINT
 FS 30 - FIRE RESISTING DOOR 30 MINS
 FS 60 - FIRE RESISTING DOOR 60 MINS
 (EL) - EMERGENCY LIGHT (LINEAR)
 S/C - SELF CLOSING
 VP - VISION PANEL
 (MCP) - MANUAL CALL POINT
 (IFE) - ILLUMINATED FIRE EXIT SIGN
 [S22] - FIRE EXIT SIGN (INCORPORATING DIRECTIONAL ARROW, SUCH AS →)
 [S] - SMOKE DETECTOR
 [K] - HEAT DETECTOR
 → - DIRECTION OF ESCAPE
 [S4] - USE OF WATER EXTINGUISHING NOT PROHIBITED
 [A] - 2KG CO2 EXTINGUISHER
 [B] - ULTRAFLOW EXTINGUISHER
 [FB] - FIRE BLANKET
 FRG - FIRE RESISTING GLAZING
 FRG 30 - 30 MINS FIRE RESISTANCE
 FRG 60 - 60 MINS FIRE RESISTANCE
 S11 - GENERAL MANDATORY SIGN
 S14 - FIRE DOOR KEEP LOCKED
 S13 - FIRE DOOR KEEP SHUT
 S12 - FIRE ACTION NOTICE



EXISTING G.F. PLAN
 A1 SCALE 1/100

ABBREVIATIONS:

BL	- Beam Underside Level
CL	- Ceiling Level
FA	- Floor to Arch Height (Highest Point)
FAS	- Floor to Arch Spring
FB	- Floor to Beam Height
FC	- Floor to Ceiling Height
FL	- Floor Level
FH	- Floor to Head Height
FS	- Floor to Sill Height
FSC	- Floor to Suspended Ceiling Height
RFL	- Raised Floor Level
SCL	- Suspended Ceiling Level
SH	- Sill to Head Height
FP	- Fire Place

This page is intentionally left blank